

STEP STOOL



SERIES L-3042

FIBERGLASS MINI WORKING PLATFORM LADDER

TYPE IA

300 LBS
LOAD CAPACITY

(Includes weight of user plus materials)

LIGHTWEIGHT
AND EASY TO
TRANSPORT

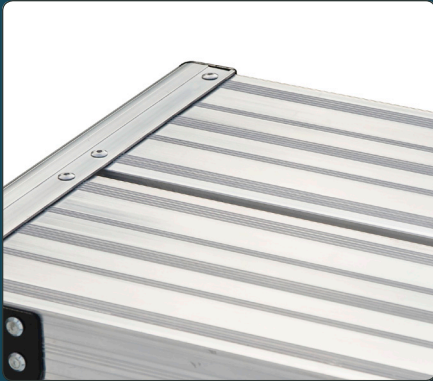
PERFECT
FOR PAINTING
AND WORKING
AROUND THE
HOUSE

12"
WIDE
STANDING
SURFACES



BECAUSE WORK AIN'T PLAY.

STEP STOOL



1 12" Wide
Slip-resistant standing surface



2 Locking Hinges
Create stability and allow the platform to fold and be stored



3 Durable Handle
For easy transportation



4 Slip-resistant
Rubber feet



5 Rails
Durable non-conductive fiberglass



MODEL	HEIGHT TO PLATFORM	MAX. REACH	WORK AREA	BOTTOM WIDTH	APPROX. SPREAD	APPROX. WIEIGHT (LBS)	APPROX. CUBES
L-3042-03	21"	8' 4"	3' x 12"	16"	52 1/4"	12	2.4'



LOUISVILLE LADDER.COM

1.800.666.2811

