

# PINNACLE



SERIES **FXP1700XL**

TYPE **IA**

# 300 LBS

LOAD CAPACITY

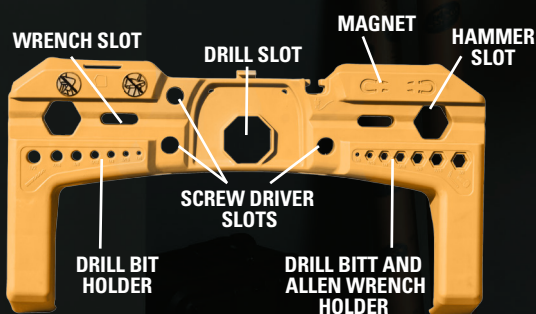
*(Includes weight of user plus materials)*

## FIBERGLASS PLATFORM LADDER

## GET THE LADDER WITH MORE STRENGTH AND MORE LENGTH.

The ultimate version of the Pinnacle FXP1700 line, 1700XL adds additional space, strength, and size, so you have greater productivity for the job at hand. Featuring the same convenient, non-conductive ProTop™ molded ladder design as other 1700 models, the XL boasts a significantly more spacious platform and a load capacity that can handle the heavy lifting. This Pinnacle is at the top of the class when it comes to top-of-the-line performance.

**OUR COMPETITORS AIN'T GOT NOTHING ON THIS PROTOP**



**LOUISVILLE**  
LADDER

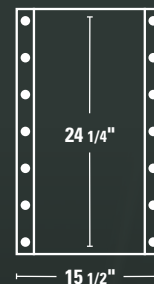
BECAUSE WORK AIN'T PLAY.



FXP1704XL

## EXTENDED HANDRAIL

AT TOOL BELT HEIGHT  
FOR ADDED COMFORT



## 19% LARGER PLATFORM

vs. other  
leading ladders

## WORK FACING MULTIPLE DIRECTIONS

It is not recommended that worker face ladder steps while on platform

## NOW AVAILABLE WITH **CASTERS**

Add suffix -4C  
to your order



**ANSI**  
Meets or exceeds requirements  
of American National Standard for Ladders  
ANSI A14.5





### 1 ProTop™

Holds every tool for any job at the perfect height for easy access. Heat transfer top displays the duty rating and is scratch and UV resistant.



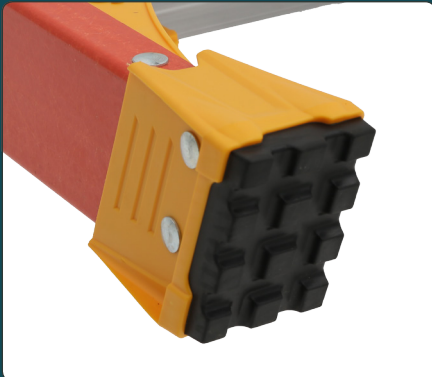
### 2 Larger Platform

Spacious platform allows for more secure, comfortable movement.



### 3 Extended Handrail

36" heavy-duty handrail runs from platform to peak providing a secure 3-sided barrier.



### 4 Raptor Boot™

Polypropylene copolymer upper boot and thick, non-marring thermoplastic elastomer tread deliver maximum protection for your ladder and its cargo.



### 5 SHOX™

Advanced impact absorption system offers superior protection against damage.



MODEL	HT. TO PLATFORM	STEP DEPTH	MAXIMUM REACH	BOTTOM WIDTH	SPREAD	APPROX. WT.	VOLUME
FXP1702XL	2'	3"	8' 6"	21 7/8"	36"	19 lbs	8 ft <sup>3</sup>
FXP1703XL	3'	3"	9' 5"	23 3/8"	42"	22 lbs	10.3 ft <sup>3</sup>
FXP1704XL	4'	3"	10' 5"	24 7/8"	48"	25 lbs	12.8 ft <sup>3</sup>
FXP1705XL	5'	3"	11' 4"	26 3/8"	54 1/2"	28 lbs	15.4 ft <sup>3</sup>
FXP1706XL	6'	3"	12' 3"	27 7/8"	61 1/2"	32 lbs	18.3 ft <sup>3</sup>
FXP1708XL	8'	3"	14' 2"	30 7/8"	74"	48 lbs	24.7 ft <sup>3</sup>
FXP1710XL	10'	3"	16' 1"	33 7/8"	88"	62 lbs	31.9 ft <sup>3</sup>
FXP1712XL	12'	3"	18'	36 7/8"	101 1/2"	75 lbs	40.1 ft <sup>3</sup>