

MODULAR GUARDRAIL SYSTEMS



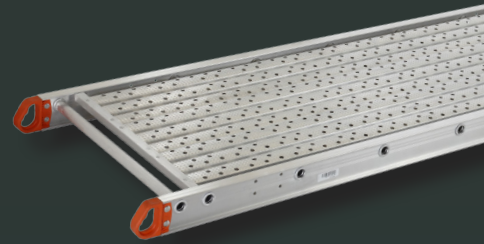
FOR PLANKS AND STAGES



STAGES

Available in these load capacities:
250lbs, 500lbs, and 750lbs.

Available in a variety of sizes from:
12-in to 28-in Wide
5-ft to 40-ft Long



NESTABLE STAGES

500lbs load capacity

Available in a variety of sizes from:
12-in to 20-in Wide
12-ft to 24-ft Long



BECAUSE WORK AIN'T PLAY.

See catalog for more information



MODULAR GUARDRAIL SYSTEMS



SPECS

FOR PLANKS AND STAGES

DETERMINE WHICH PARTS YOU NEED TO CREATE YOUR GUARDRAIL SYSTEM

SINGLE SIDED SYSTEM*						
STAGE LENGTH	GUARDRAIL POST ASSEMBLY	9' GUARDRAIL LENGTH	13' GUARDRAIL LENGTH	9' TOEBOARD LENGTH	13' TOEBOARD LENGTH	WEB BRACE ASSEMBLY**
	MPT-01	MGR-09	MGR-13	MTB-09	MTB-13	MRF-01
5'	2	2	0	1	0	2**
6'	2	2	0	1	0	2**
8'	2	2	0	1	0	2**
10'	2	0	2	0	1	2**
12'	3	0	2	0	1	3**
14'	3	0	2	0	1	3**
16'	3	4	0	2	0	3**
18'	3	0	4	0	2	3**
20'	4	6	0	3	0	4**
24'	4	6	0	3	0	4**
28'	5	4	2	2	1	0**
30'	5	8	0	4	0	0**
32'	5	4	4	2	2	0**
36'	6	10	0	5	0	0**
40'	6	6	4	3	2	0**

*Double all quantities, except for web brace assembly, for two-sided systems.

THREE SIDED SYSTEM							
STAGE LENGTH	GUARDRAIL POST ASSEMBLY	9' GUARDRAIL LENGTH	13' GUARDRAIL LENGTH	9' TOEBOARD LENGTH	13' TOEBOARD LENGTH	WEB BRACE ASSEMBLY**	ENDRAIL ASSEMBLY
	MPT-01	MGR-09	MGR-13	MTB-09	MTB-13	MRF-01	MER-01/ MER-02*
5'	4	2	0	1	0	2**	2
6'	4	2	0	1	0	2**	2
8'	4	2	0	1	0	2**	2
10'	4	0	2	0	1	2**	2
12'	5	0	2	0	1	3**	2
14'	5	0	2	0	1	3**	2
16'	5	4	0	2	0	3**	2
18'	5	0	4	0	2	3**	2
20'	6	6	0	3	0	4**	2
24'	6	6	0	3	0	4**	2
28'	7	4	2	2	1	0**	2
30'	7	8	0	4	0	0**	2
32'	7	4	4	2	2	0**	2
36'	8	10	0	5	0	0**	2
40'	8	6	4	3	2	0**	2



PRODUCT WEIGHTS	
ITEM	APPROX. WT. (LBS)
MPT-01	0.56
MGR-09	2.31
MGR-13	3.33
MTB-09	2.38
MTB-13	3.44
MRF-01	1.13
MER-01	2.00
MER-02	2.84

FOUR SIDED SYSTEM							
STAGE LENGTH	GUARDRAIL POST ASSEMBLY	9' GUARDRAIL LENGTH	13' GUARDRAIL LENGTH	9' TOEBOARD LENGTH	13' TOEBOARD LENGTH	WEB BRACE ASSEMBLY**	ENDRAIL ASSEMBLY
	MPT-01	MGR-09	MGR-13	MTB-09	MTB-13	MRF-01	MER-01/ MER-02*
5'	4	4	0	2	0	2**	2
6'	4	4	0	2	0	2**	2
8'	4	4	0	2	0	2**	2
10'	4	0	4	0	2	2**	2
12'	6	0	4	0	2	3**	2
14'	6	0	4	0	2	3**	2
16'	6	8	0	4	0	3**	2
18'	6	0	8	0	4	3**	2
20'	8	12	0	6	0	4**	2
24'	8	12	0	6	0	4**	2
28'	10	8	4	4	2	0**	2
30'	10	16	0	8	0	0**	2
32'	10	8	8	4	4	0**	2
36'	12	20	0	10	0	0**	2
40'	12	12	8	6	4	0**	2

*MER-01 required on 12" and 14" wide planks. MER-02 required on 20", 24" and 28" wide planks.
**Required on planks with side rails LESS than 6" tall



LOUISVILLE
LADDER
BECAUSE WORK AIN'T PLAY.

*Double all quantities, except for web brace assembly, for 2-Sided Systems
**Required on planks with side rails of less than 6"-height
***MER-01 required on 12" and 14"-wide planks. MER-02 required on 20", 24" and 28"-wide planks.
See catalog for more information

