

# LADDER SAFETY GUIDE

GET THE **GREEN** LIGHT ON YOUR JOB SITE

**G**

GET CLOSER TO YOUR WORK  
WITH THE **CROSSSTEP** 



**R**

REMEMBER TO KEEP YOUR BELT  
BUCKLE BETWEEN THE RAILS TO  
PREVENT OVERREACHING

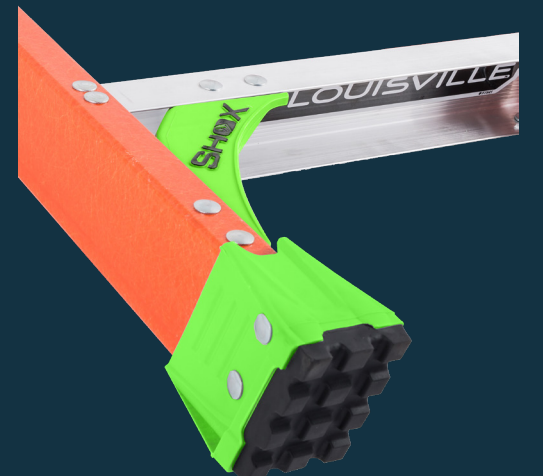


**E**

EDUCATE YOURSELF ON HOW TO  
PROPERLY USE A LADDER

**E**

EVALUATE AND ASSESS YOUR  
LADDERS CONDITION BEFORE  
EACH USE



**N**

NEVER LEAN A LADDER THAT  
WASN'T MADE TO LEAN



**LOUISVILLE**  
LADDER  
BECAUSE WORK AIN'T PLAY.