

# TWIN FRONT



SERIES FM1500

TYPE IA

# 300 LBS

LOAD CAPACITY

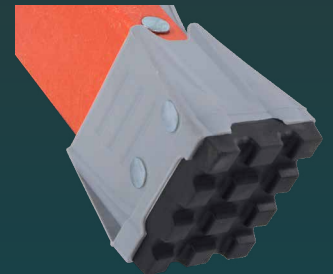
(Includes weight of user plus materials)

## FIBERGLASS TWIN FRONT STEPLADDER



**BOTH SIDES**  
CAN BE USED  
SIMULTANEOUSLY BY  
**ONE PERSON**  
PLUS MATERIALS.

**RAPTOR BOOT™**  
SLIP-RESISTANT FOOTING AND DURABILITY.



**LOUISVILLE**  
LADDER

BECAUSE WORK AIN'T PLAY.

**ANSI**  
Meets or exceeds requirements  
of American National Standards Institute



MEETS  
**OSHA**  
REQUIREMENTS

# TWIN FRONT



SERIES FM1500



**1 Heavy-Gauge Steel Hinges**



**2 Spreader Braces**



**3 Double-Rivet Step Construction**



**4 SHOX™**  
Advanced impact absorption system offers superior protection against damage.



**5 Raptor Boot™**  
Non-marring tread delivers slip-resistant footing and durability.



FM1500 FLYER JUNE 2022 © Louisville Ladder, Inc. All rights reserved.

MODEL	LADDER SIZE	HIGHEST STANDING LEVEL	MAX. REACH*	BOTTOM WIDTH (IN)	APPROX. SPREAD (IN)	APPROX. WEIGHT (LBS)	APPROX. CUBES (FT)
FM1503	3'	1'11"	7' 6"	17 3/4"	31"	15	3.2
FM1504	4'	3'9"	8' 6"	18 3/4"	37 7/8"	19	4.5
FM1506	6'	5'8"	10' 5"	22 1/2"	53 3/4"	26	8.2
FM1508	8'	7'7"	12' 3"	25 1/4"	68 3/8"	35	12.2
FM1510	10'	9'6"	14' 2"	27 3/4"	83 7/8"	44	16.8

\*Assumes 5' 7" person with 12" vertical reach  
Both sides of twin front ladders can be used simultaneously by one person plus materials. The duty rating is per side.



WWW.LOUISVILLELADDER.COM

